

ONYX X10

1. INTRODUCTION

To adapt your media with the whole Printer/RIP/Inks you have to do:

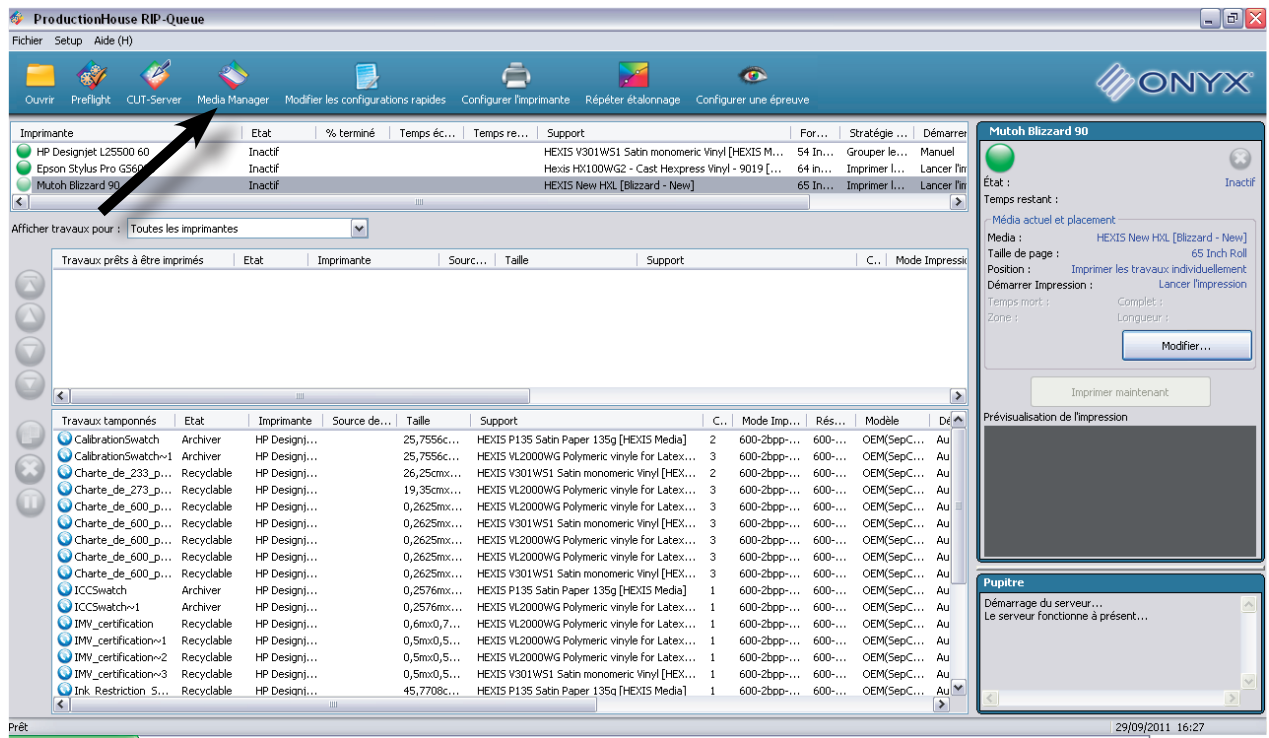
- A correct printer calibration. This calibration includes heads alignment depending of the media's thickness, the bi-directional setting, the feed avance setting, the temperature of heaters.
- A correct software calibration in the RIP. This calibration includes colours configuration, resolution, number of passes, dot pattern, uni or bi-directional, head speed
- A correct colour calibration in the RIP software. This calibration includes primaires inks restrictions, dark/light inks transitions, linearization, total ink limit.
- A correct colour characterization of the system with an ICC profile

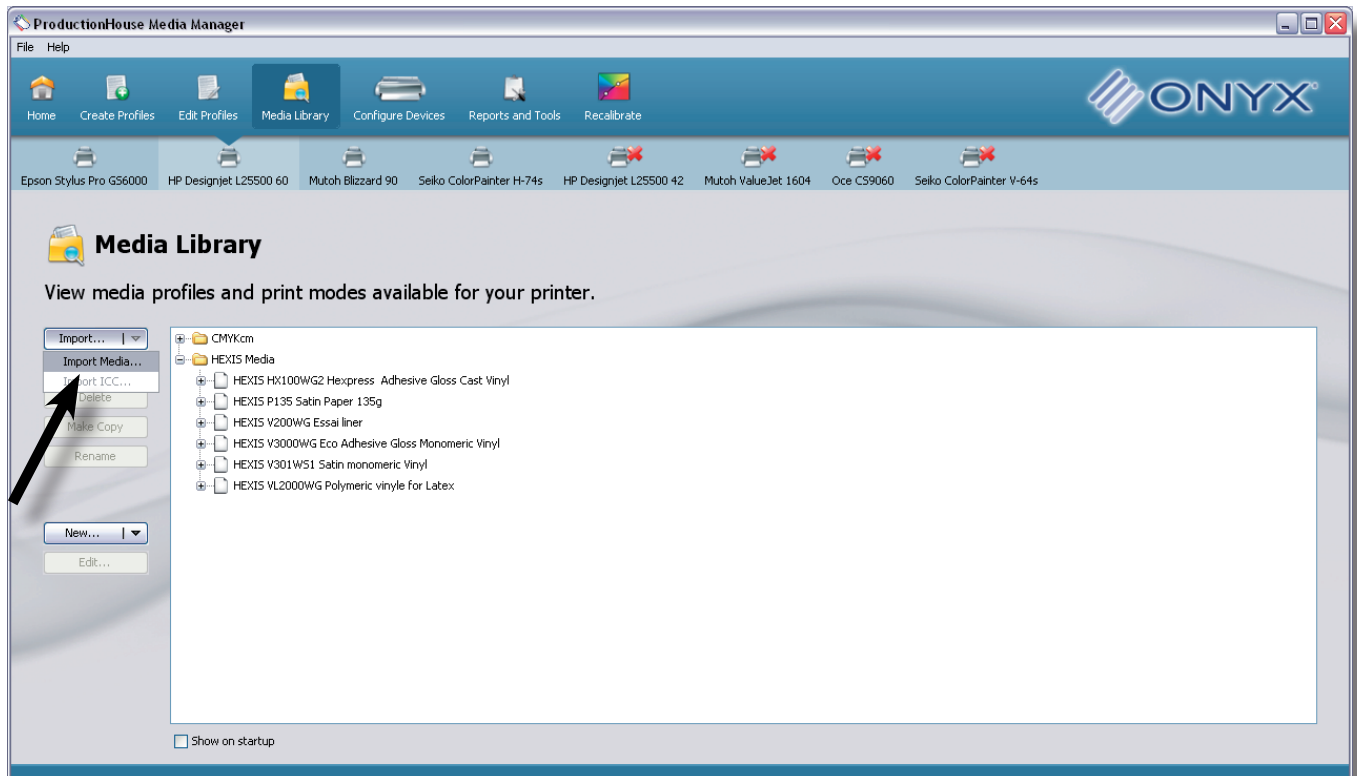
When we import a calibration in a RIP software, this calibration must have inside all the parameters of the printer, of the RIP and an ICC profile.

This operation is simplified by different export formats used by RIP software manufacturers.

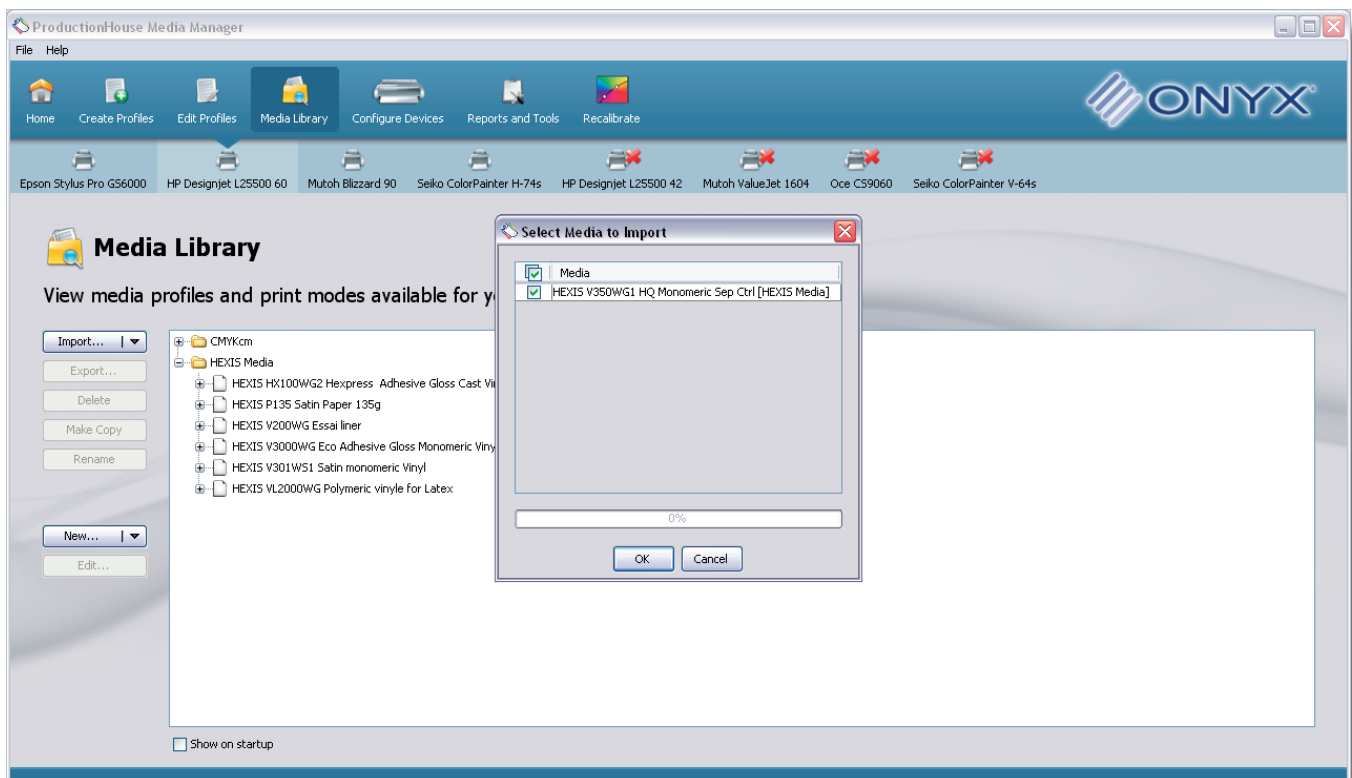
2. IMPORT PROFILES IN ONYX X10

1- Go in *Media Manager* :



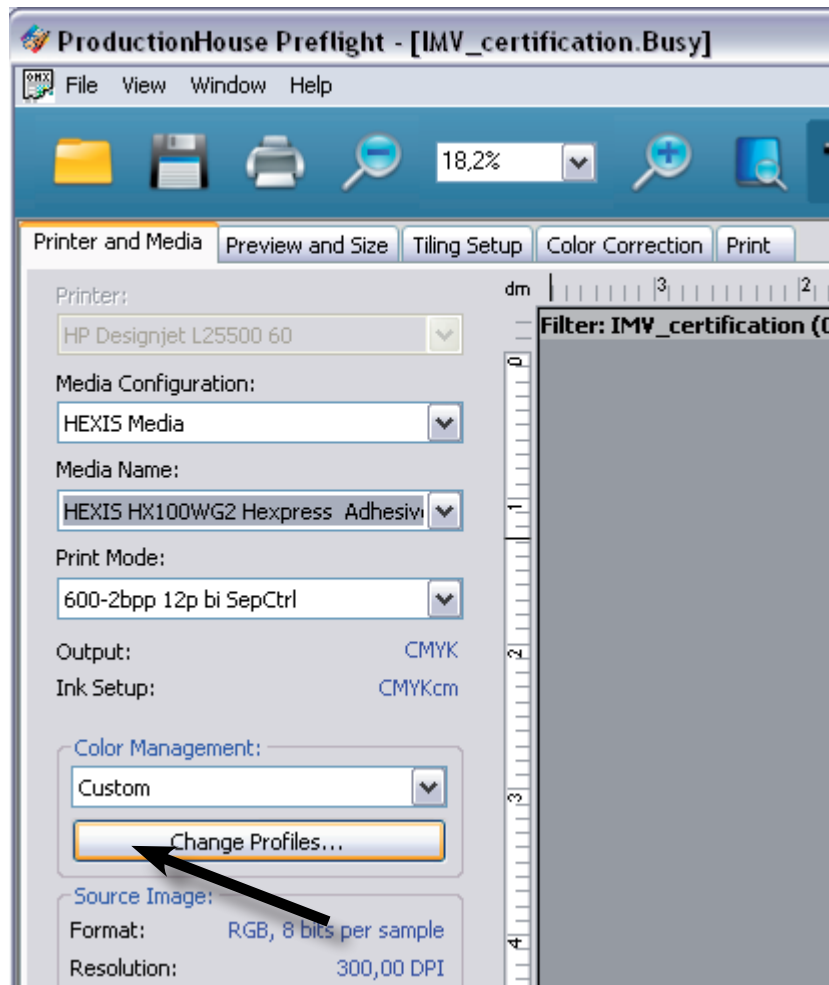
2- Go in *Media Library* and then *Import* and *Import media*

3- Import your .oml file

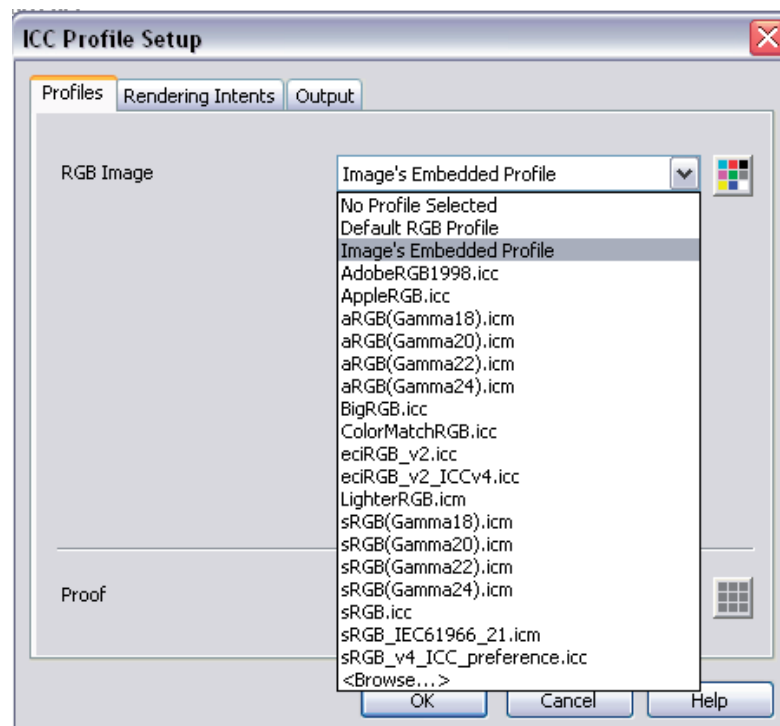


4- Click OK and your media will be imported. You can go in the main window to print your file with this calibration.

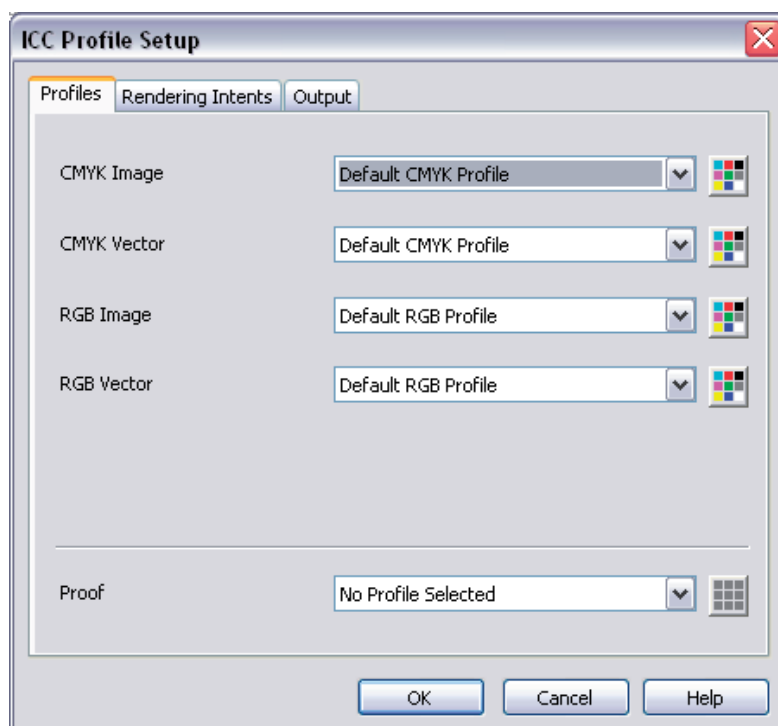
5- To set the colour management, open your file in *Preflight* and go in *Change Profiles*



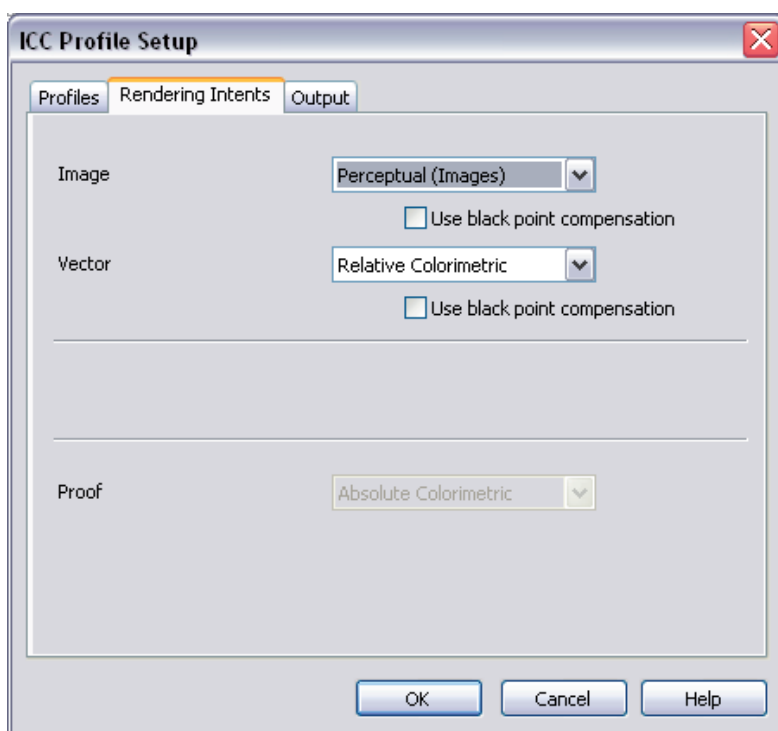
6- Set the input profiles corresponding to your work habits and choose *Image's Embedded profile* when it's available



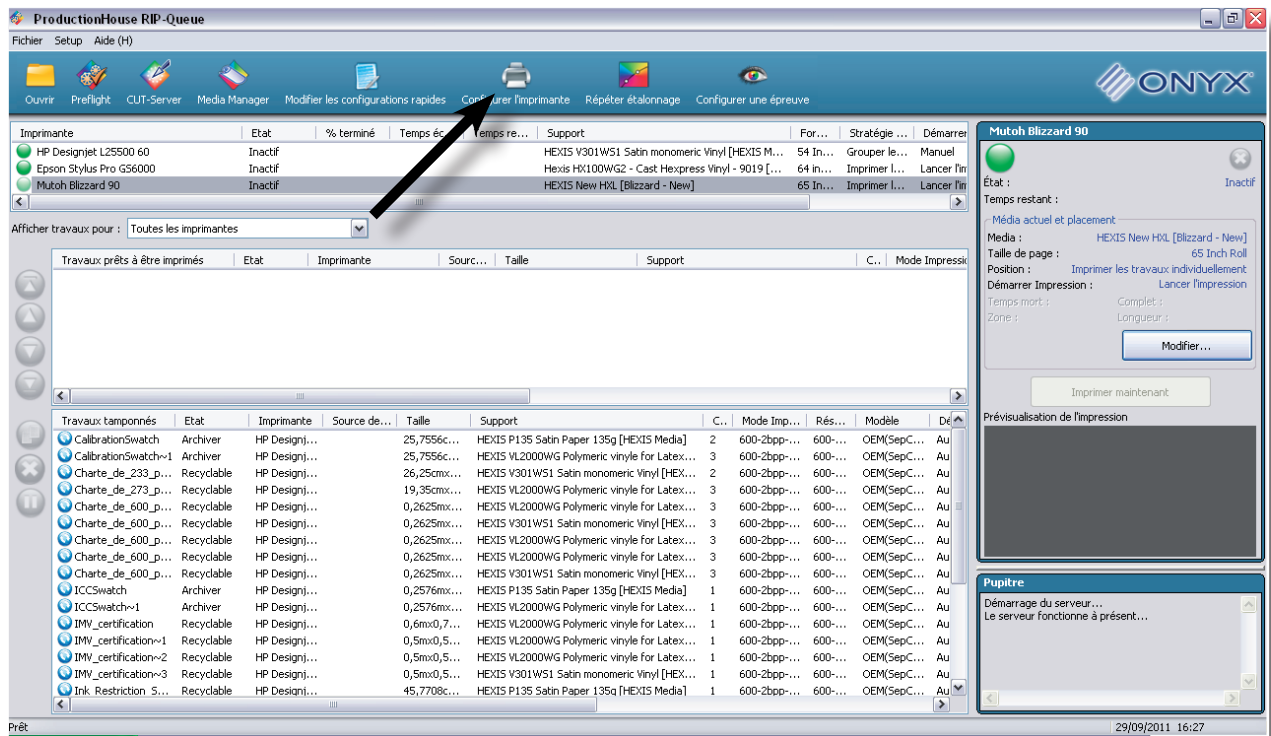
7- If you have different choices you have to know which input profiles you used in your publishing software



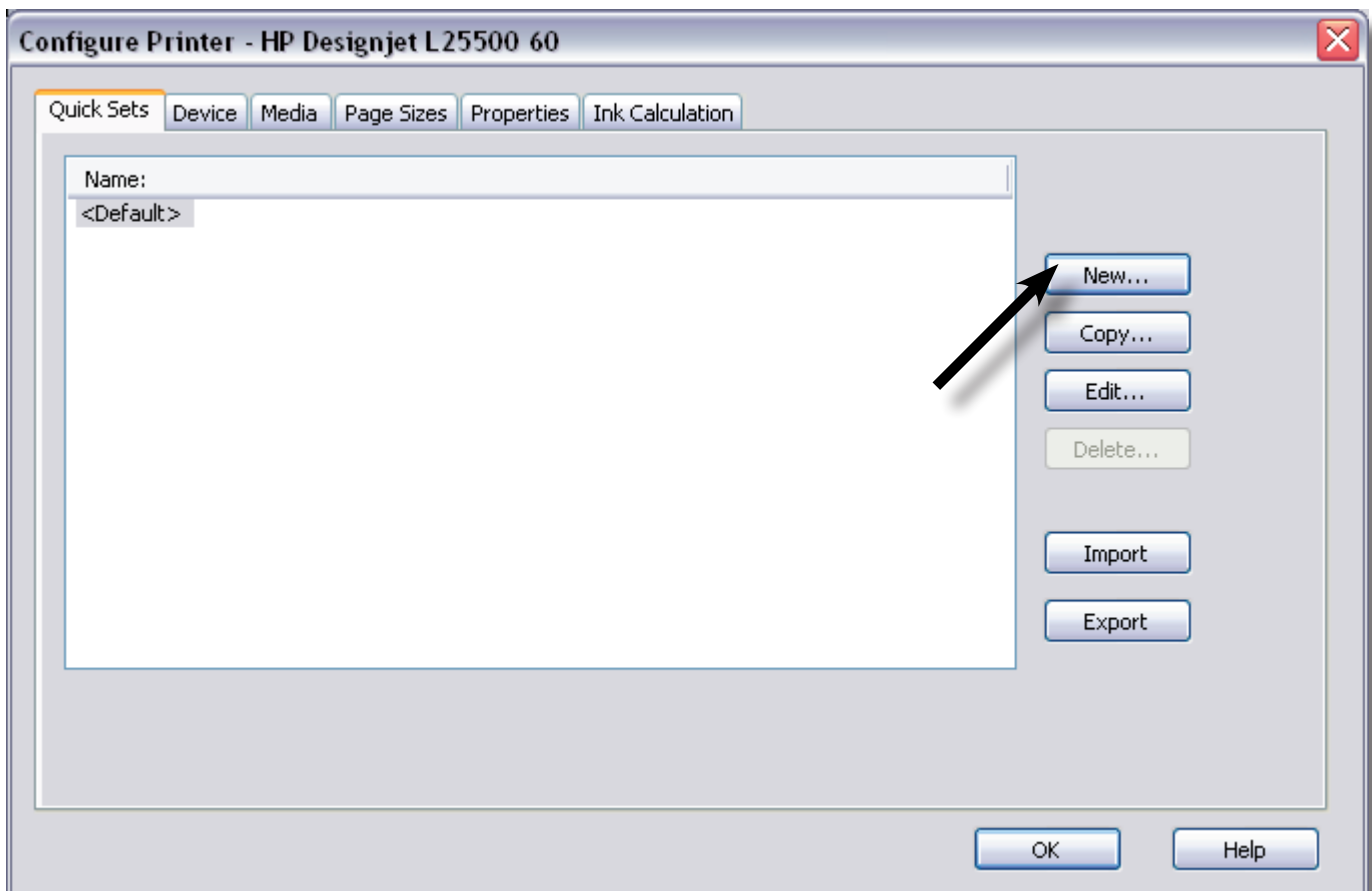
8- Go in *Rendering Intents* and select one rendering for bitmap image and one for vector image



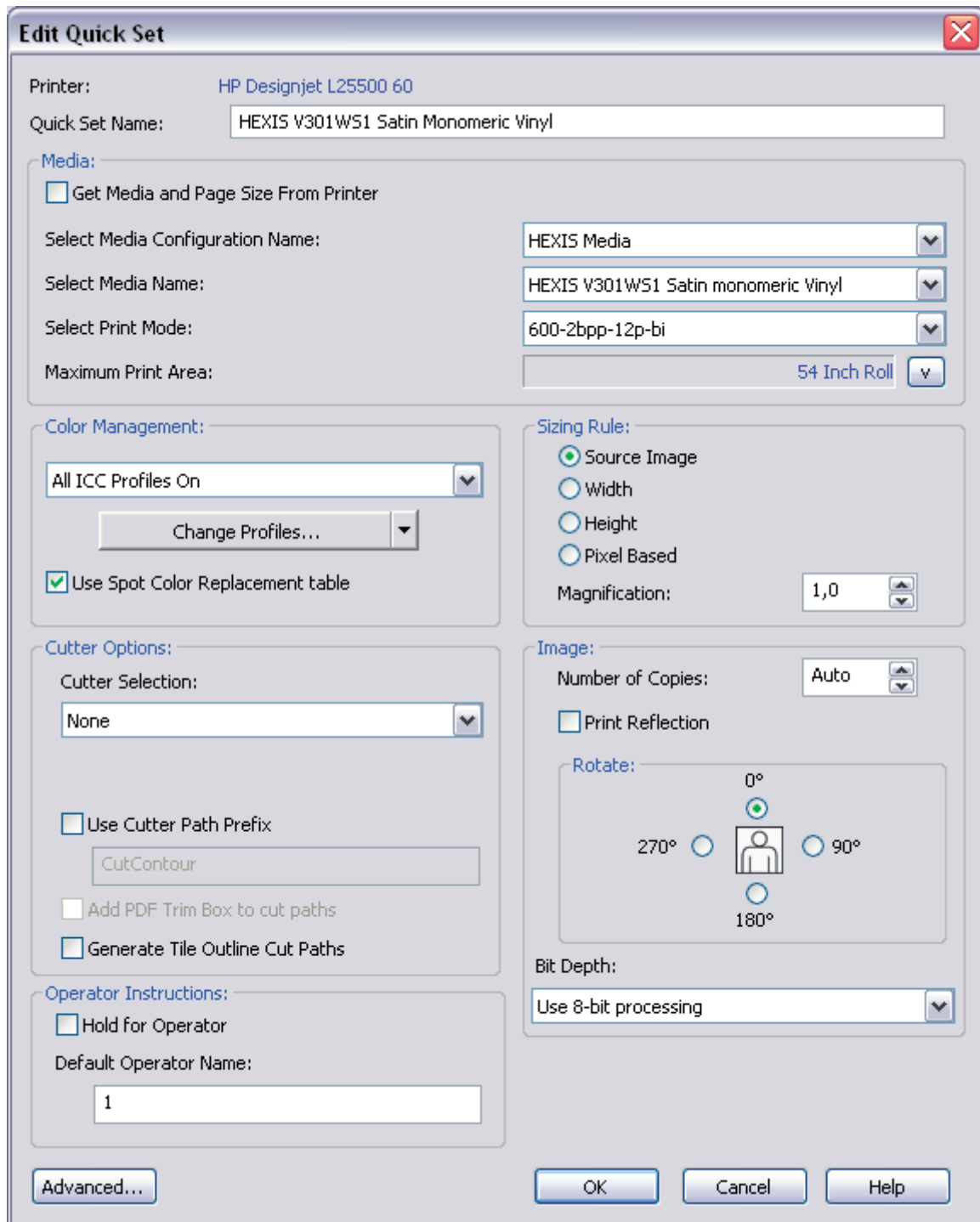
9- If you want create a new quick set go in *Configure Printer*



10- Go in *New*



11- Give a name for your new quick set and select the media and the options



12- Enjoy your printing !!!

Disclaimer

In order to give the best customer support and ensure that you obtain the best printing results, Hexis provides a number of tools and recommendations for the use of our products.

These ICC colour profiles are provided free of charge.

Hexis declines all responsibility for any direct or indirect consequences resulting from the installation and the use of these ICC profiles.

The user is solely and entirely responsible for the printing quality and the colorimetric precision obtained with the help of these profiles.

These profiles were developed by our colorimetrics specialists in our digital printing department. They are precise only for a given illuminant (standard illuminant), for the printer with which they were developed and for the ambient temperatures and the relative humidity corresponding to their set up. Indeed, certain parameters may change from one printer to another, but also in relation to environmental conditions which have important consequences on the printing quality.

The user must be aware that an ICC profile for an output peripheral does not work independently. It is only one tool amongst others in the digital imaging chain which allows him to master colour handling and the correct use requires solid knowledge of colour management.